

# MIRRORSTONE

## LIGHTING SPECIALIST

### SPI 3in1 LED Controller (Single color + RGB + RGBW)

Model No.: SPIR3

## Product Feature

- 3 in 1= Single color + RGB + RGBW SPI controller
- Pixel Dots: Single color (2048), RGB (1536), RGBW (1024)
- Output Signal: SPI (TTL) 800Kbps
- Setting color and length
- Setting ON/OFF time and color
- Selecting single color, RGB or RGBW output mode via “SET” button
- Push ON/OFF and changing dynamic mode
- Total 20 dynamic modes and support editing color of them
- Support PUSH switching dynamic mode
- Have DND function, usually used for power failure area to save power.



## Product Parameter

Working voltage: DC 5V-24V

Output current: 10A

Output signal: SPI(TTL) 800Kbps

Protocol: 2.4GHz RF

Control Distance: 30m

Pixel Number: single color: 2048pt, RGB:1536pt  
RGBW:1024pt

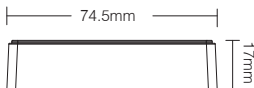
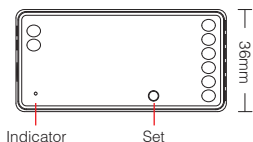
Dimension: 74.5x36x17mm

Working Temperature: -10~40°C

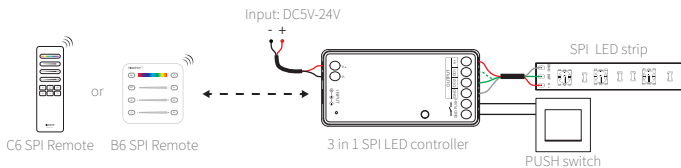
EMC standard (EMC): ETSI EN 301 489-1 V2.2.3  
ETSI EN 301 489-17 V3.2.4

Security Standard(LVD): EN 62368-1; 2020+A11; 2020

Certification: CE, EMC, RED



# Connection Diagram



## Output mode setting

**Single color mode:** Press the SET key repeatedly until the indicator turns red

**RGB mode:** Press the SET key repeatedly until the indicator turns green

**RGBW mode:** Press the SET key repeatedly until the indicator turns blue

## Compatible chips( controller don't need to set chip types)

TM1809, TM1804, TM1812, SK6813, UCS1903, UCS1909, UCS1912, UCS2903, UCS2909, UCS2912, WS2811, WS2812, WS2813, WS2815, SK6812(RGBW), WS2813(RGBW), WS2814(RGBW)

## Compatible remote ( purchase separately)



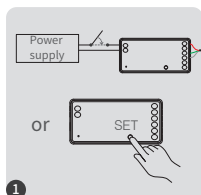
C6 SPI Remote



B6 SPI Remote

# Link/Unlink

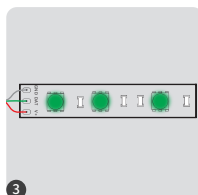
## 1). Link



Power off 10 seconds and power on again or short press "SET"



Short press "ON" button 3 times within 3 seconds.

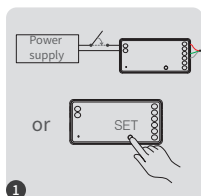


Green flashing state, then the code is successful.



Link is failed if light doesn't flash, please repeat above steps  
(Attention: can not link again if remote already finished linking)

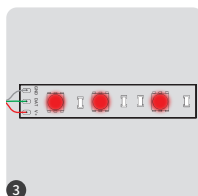
## Unlink:



Power off 10 seconds and power on again or short press "SET"



Short press "ON" button 5 times within 3 seconds.



Red flashing state, Then clear the code successfully.



Unlink is failed if light doesn't flash, please repeat above steps  
(Attention: no need to unlink if the light never be linked)

# Setting

## 1. Setting the color sequence from strip light

Long press "OFF" 5 seconds until lighting up single color



Flashing red, short press  
red area



Flashing green, short  
press green area



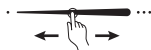
Flashing blue, short  
press blue area



Flashing white, short press  
"↺" button

## 2. Setting Length (Pixel number: mini 8pt, max 2048pt)

Long press "ON" 5 seconds until lighting up white color and last point is blinking



Sliding to change length



Short press to add one pt, long  
press to add pt continuously



Short press to reduce one pt, long  
press to reduce pt continuously

Short press "ON/OFF" to leave out once setting is done

## 3. Setting width for dynamic mode



Sliding pixel number to change pt number and get different length for dynamic mode which have various sections.

## 4. Setting time and color for ON/OFF

Short press "OFF" 5 times to enter into running ON/OFF



Sliding "Speed" to set time for ON/OFF



Sliding "RGB" to set color for ON/OFF

Short press "ON/OFF" to leave out once setting is done

## 5. Turn Do Not Disturb mode on and off (ON by default)

Turn on "Do Not Disturb" (applicable to areas with frequent power outages to save energy)

### Turn on Do Not Disturb mode:

Short press the "OFF" button 3 times within 3 seconds, and then short press the "ON" button 3 times. The light flashes 4 times to indicate success.

**Note:** When the lamp is powered on again after a power outage, its status (lights on or off) will remain the same as before the power outage.

### Turn off Do Not Disturb mode:

Short press the "ON" button 3 times within 3 seconds, and then short press the "OFF" button 3 times. The light flashes 4 times slowly to indicate successful shutdown.

**Note:** When the lamp is powered on again after a power outage, its status will be on by default.

## Attention:

1. When installing the device, please turn off the power to ensure safety.
2. Please check if the input voltage is consistent with the device.
3. Non-professional users cannot disassemble the device directly, otherwise the device may be damaged.
4. Do not use the device near large metal areas or areas with strong electromagnetic waves, otherwise the remote control distance will be seriously affected.